

The page features a decorative border of school supplies and autumn leaves. At the top, there is a paint palette with yellow, green, and blue colors, a pair of red scissors, a calculator, and a USB drive. On the left side, there are yellow sticky notes, a blue folder, and a blue pen. On the right side, there is a blue folder, a red and white striped pen, and a blue pen. At the bottom, there is a red alarm clock, a blue pushpin, a green folder, a blue pen, a magnifying glass, and several colored pencils (blue, purple, green, yellow, red). The background is a light yellow grid pattern.

SURAJ

SURAJ SCHOOL

SUMMER HOLIDAY
HOMEWORK
2024- 25

GRADE- 8

A decorative border surrounds the page, featuring a variety of colored pencils (red, blue, green, yellow, purple, orange, pink, brown) arranged in rows. Wavy lines in matching colors weave through the pencils, creating a vibrant and artistic frame.

PREFACE

Dear Students & Parents,

Welcome to the Summer Adventure Homework!

Summer Vacation is a time students eagerly wait for which also brings much-needed respite from the hectic school days. We are thrilled to present this exciting array of activities designed to keep our middle school students engaged, inspired, and ready to explore new horizons during the break.

We at **SURAJ** believe that learning is a lifelong journey, and the summer holidays offer a valuable opportunity for students to continue their educational pursuits outside the traditional classroom setting. This homework has been thoughtfully curated by our **TEACHERS** to provide a balance of academic enrichment, creative expression, and personal exploration, ensuring that our students remain intellectually stimulated and motivated throughout the summer months.

Inside these pages, you'll find a rich variety of activities designed to challenge, inspire, and spark curiosity in students. From thought-provoking writing prompts and stimulating math puzzles to hands-on science experiments, artistic endeavors, and community service projects, there's something here to captivate every young mind and encourage them to think critically, express themselves creatively, and make meaningful contributions to the world around them.

As you embark on this summer homework journey, use this time to explore new interests, pursue passions, and cultivate the skills and qualities that will empower you to succeed in the classroom and beyond.

With Love,

SURAJ SCHOOL

General instructions to be followed in summer vacation: -

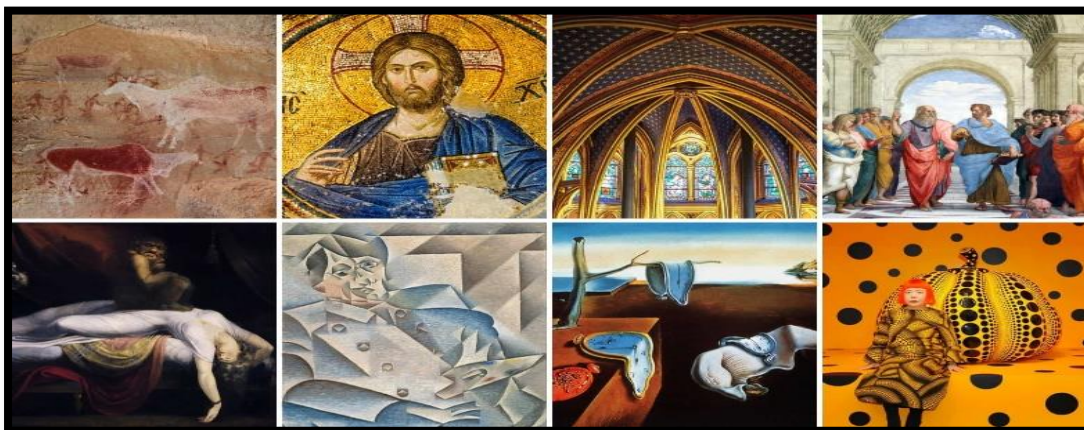
- ❖ Revise and complete the whole work done till date.
- ❖ Display your creativity in holiday homework.
- ❖ Meditate for 10-15 minutes daily.
- ❖ Practice yoga for at least half an hour daily.
- ❖ As the summers are at its peak, start keeping water for the birds on regular basis.
- ❖ Increase your intake of fresh fruits and water to keep you well hydrated and energetic.

ENGLISH

1.) Shark Tank Pitch

Project Challenge: Craft a compelling business plan that will make investors want to fund your company.

The popular television reality show “Shark Tank” provides a window into the high-stakes reality of business start-ups. Using the show as a template, embark on your own mock start-up ventures, including conducting market research, testing products, and working to convince



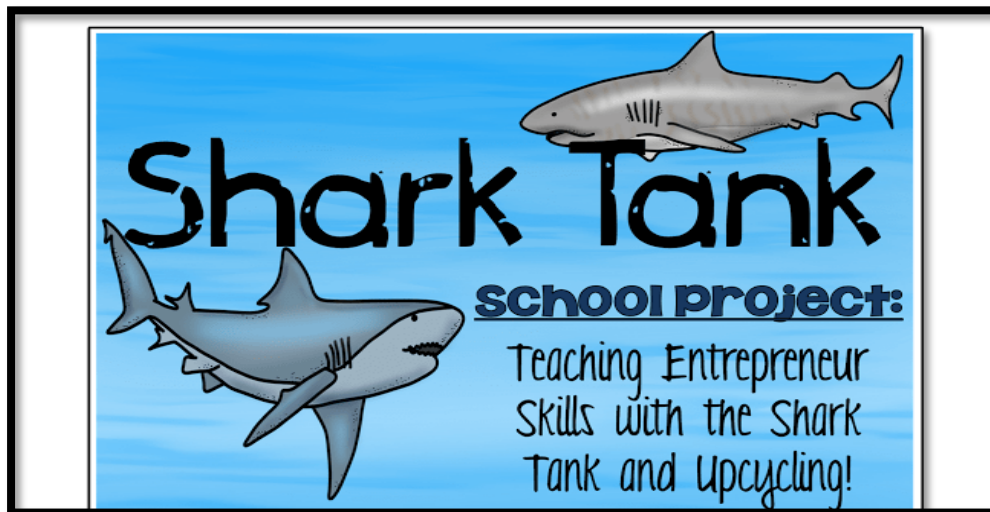
2)

Journey of art

Research a particular art movement or artist and create an artwork inspired by that movement or artist.

You can research on the following art movements or artists:

- Cubism
- Romanticism
- Abstract expression
- Renaissance
- Minimalism
- Pop art
- Pablo Picasso



- Andy Warhol
- Neeraj Goswami
- Henri Matisse
- S H Raza
- M F Hussain

Also, write a paragraph of 100- 150 words describing what intrigued you the most about the artist or art movement you chose.

3.) This vacation record all your activities (indoor as well as outdoor) in the form of a newspaper. Keep the following points in mind:

- This activity is to be done on an A3 sized white sheet
- Use both sides of the sheet
- The newspaper should have a masthead (the name of a newspaper printed at the top of the front page)
- Record all the activities that you did individually as well as a family or as a group
- Every article should be accompanied by a picture (hand drawn or printed)
- Every article should be handwritten only.
- The whole newspaper should have a black and white colour scheme (except for the images)

Your newspaper could also include different interviews, games, recipes, et

Assignment

Fill in the blanks with correct form of verb.

1) Neither of the paintings _____ sold.

A have been

B were

C are

D was

2) The news _____ not updated timely.

A were

B have

C is

D are

3) They _____ into their cars and drove away.

A has got

B have got

C gets

D got

4) Sita or her brothers _____ to be blamed.

A is

B has

C are

D was

5) The Chief guest, with his wife, _____.

A has left

B are leaving

C is left

D lefting

6) Pronouns take the place of

A a noun

B a verb

C an adjective

7) What do pronouns help us add to our speech and writing?

A personality

B variety

C detail

8) What sort of pronouns are the words "he", "me" and "you"?

A interrogative

B possessive

C personal

9) What sort of pronoun is the word "we"?

A singular

B subject

C object

10) Which personal pronoun is almost always used for a thing?

A he

B it

C they

11) Rahul is an intelligent boy. Here the adjective is –

A intelligent

B Rahul

C boy

D none of the above

12) She wore a beautiful dress on her birthday. Here the adjective is –

A she

B birthday

C dress

D beautiful

13) Leela said it in a feeble state. Here the adjective is –

A state

B feeble

C Leela

D none of the above

14) My mother is angry with me. Here the adjective is –

A angry

B my mother

C with

D me

15) They live in a big house. Here the adjective is –

A they

B live

C house

D big

HINDI

1.) जॉब एप्लिकेशन तैयार करें

छात्रों द्वारा अपना एक रिज्यूम (resume) और काल्पनिक नौकरी के लिए संक्षिप्त परिचय देते हुए एक एक कवर लेटर तैयार करना है।



2.) भारत की खोज किताब को पढ़िए और सोचिए कैसे सिन्धु घाटी सभ्यता में हड़प्पा शहर का निर्माण हुआ, यदि आपको किसी शहर का डिजाइन तैयार करना हो तो आप कैसे करोगे?

- आपको एक शहर का डिजाइन तैयार करना है। जिसमें शहर की सभी आवश्यक स्थानों को शामिल किया गया हो।

जैसे –

- ✓ मॉल
- ✓ बाज़ार
- ✓ रोड़
- ✓ अस्पताल

अभ्यास पत्रिका

1. सही विकल्प चुनें -

स्वच्छ

(क) स्व+अच्छ (ख) सु +अच्छ (ग) स्व +च्छ (घ) स्व +छ

न्यायालय

(क) न्याय+आलय (ख) न्याय +लय (ग) न्याया +लय (घ) न्याय +लाय

निष्पाप

(क) निस+पाप (ख) निः +पाप (ग) निज +पाप (घ) निष +पाप

अनल शब्द का क्या अर्थ है -

(क) आग (ख) हवा (ग) फूल (घ) आसमान

पीतांबर कैसा शब्द है -

(क) रूढ़ (ख) यौगिक (ग) योगरूढ़ (घ) अन्य

निर्जीव का विलोमार्थी क्या है -

(क) अजीव (ख) सजीव (ग) परजीव (घ) कदीव

काम का तत्सम रूप क्या है -

(क) क्रम (ख) कर्म (ग) कृम (घ) करम

विक्रय शब्द में उपसर्ग क्या है ?

(क) वि (ख) विक्र (ग) विक (घ) क्रय

घबराहट में किस प्रत्यय का प्रयोग है ?

(क) राहट (ख) हट(ग) आहट (घ) ट

पृथ्वी का पर्यायवाची शब्द क्या है -

(क) क्षीर (ख) वसुधा (ग) अलक (घ) तिमिर

Maths

1.) Learner will create nets for simple solids (prisms and pyramids) with the help of card board (6mm corrugated card board sheet) according to their roll numbers:

- Roll no. 1 to 10 – Square Pyramid and Pentagonal Prism
- Roll no. 11 to 20 – Pentagonal Pyramid and Square Prism
- Roll no. 21 to 30 – Triangular Pyramid and Rectangular Prism.
- Roll no. 31 to 40 – Rectangular Pyramid and Triangular Prism

Now, design a Power Point Presentation with 8 or 9 slides to show nets of simple solids.

Following points will be included in your PPT:

- Show all types of Prism and Pyramid.
- Difference between Prism and Pyramid.
- Tetrahedron shape
- Real life examples of these shapes. (e.g. loaf of bread being sliced)
- Explain about the Vertices, Faces and Edges of these shapes.

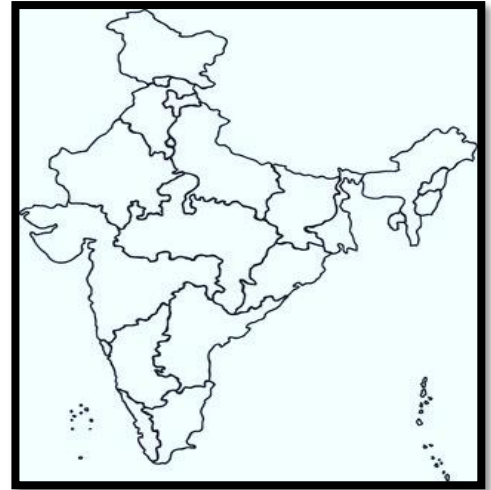
2.) Make a chart (A4 size) writing squares of the numbers 15, 25, 35,155, using the pattern of square of numbers ending with digit 5.

3.) Take a political Map of India,

Now, draw the following line segments and answer the questions that follows:

Join

- Srinagar to Thiruvanthpuram and name it AB
- Imphal to Gandhinagar and name it CD.
- Itanagar to Shimla and name it EF.
- Patna to Chennai and name it GH.



Answer the following questions:

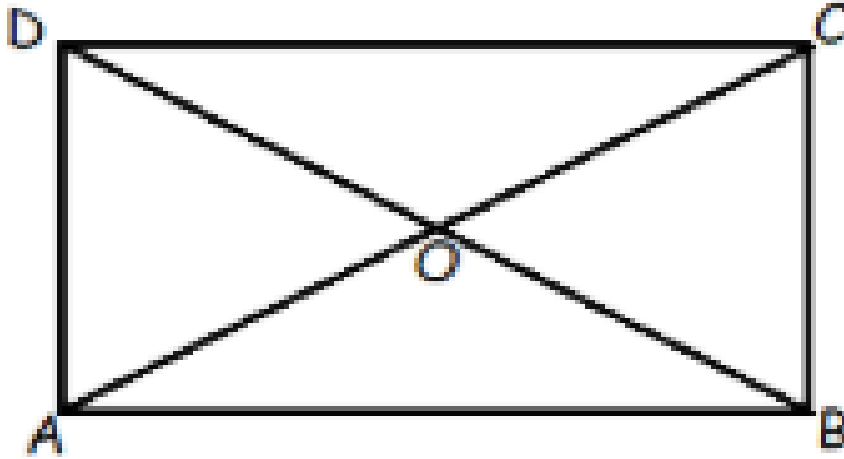
- i. Which is the shortest line segment?
- ii. Which line segment passes through Arabian Sea?
- iii. Which line segment passes through a country other than India?
- iv. Which line segment passes through the maximum states?
- v. Join the line segments CD and EF and the point of intersection as XY, then name supplementary angles, opposite angles and adjacent angles.

NOTE: Present your work on an A3 sized sheet keeping in mind neatness, creativity and accuracy.

4.) Do the following assignment in a separate thin note book:

- A) Find the number of natural numbers between 112 and 122.
- B) If $(3 \times 7) (3 \times 7) = 441$ then what is $\sqrt{441}$?
- C) Find the cube root of $13 \times 2 \times 2 \times 2 \times 13 \times 13$.
- D) Find the volume of a cube whose area of one face is 64sq m.
- E) Find the square root of 14.0625 by division method.
- F) Find the largest 4- digit number which is a perfect square.
- G) In an auditorium the number of rows is equal to the number of chairs in each row.
If the capacity of the auditorium is 3025, find the number of chairs in each row.
- H) Find the least square number which is exactly divisible by each of the numbers 8, 12, 15, 20.
- I) Find a number whose one third multiplied by its one ninth becomes 108.

- J) Sohan was asked to think the three numbers which are in the ratio 2:3:4 and the sum of their cubes is 12375. Find the numbers.
- K) A cubical box of volume 13824 cubic cm is put in a cubical room of side 2.4m. how many such boxes can be put in the room? What is the dimension of the box?
- L) Solve the following Equations
- $(2x - 5) / (3x - 1) = (2x - 1) / (3x + 2)$
 - $(3 - 7x) / (15 + 2x) = 0$
 - $(0.4y - 3) / (1.5y + 9) = -7/5$
 - $2 / (3x - 1) + 3 / (3x + 1) = 5/3x$
- M) The digits of a 2-digit number differ by 5. If the digits are interchanged and the resulting number is added to the original number, we get 99. Find the original number.
- N) What should be subtracted from thrice the rational number $-8/3$ to get $5/2$?
- O) The sum of three consecutive multiples of 7 is 63. Find these multiples. 15. Solve $3x/4 - 7/4 = 5x + 12$
- P) Perimeter of a rectangle is 13cm. if its width is $11/4$ cm, find its length. 17. The present of Sita's father is three times the present age of Sita. After six years sum of their ages will be 69 years. Find their present ages.
- Q) Five angles of a hexagon are 150° , 95° , 80° , 135° & 125° . Find the sixth angle.
- R) How many diagonals are there in a hexagon?
- S) One angle of a parallelogram is 60° . Find its opposite angle and the adjacent angle.
- T) ABCD is a trapezium with $AB \parallel DC$. If $\angle A = 50^\circ$, then find $\angle D$. In the given figure, ABCD is a rectangle and its diagonals meet at O.
- U) In the given figure, ABCD is a rectangle and its diagonals meet at O.
Find x, $(3x + 1)$. Also find BD.



SCIENCE

1.) Carbon Footprint

Carbon footprint is the total amount of carbon dioxide and greenhouse gases, released in the environment due to our daily activities. To gain better understanding of this concept, attempt the following questions:

Instructions: Answer the questions below, then fill in the corresponding value on the far right. Tally the values to find your carbon footprint. Only fill in one value for each question.

- i. Do you turn off the lights when you leave a room?
 - a) Yes ✓ a.133 _____
 - b) No b. 268 _____

- ii. How do you get to school?

- a) Walk a. 0 _____
- b) bike b. 0 _____
- c) Car c. 1115 _____
- d) Bus d. 131 _____
- e) Carpool e. 459 _____

iii. What do you eat mostly?

- a) Fast food a. 4818 _____
- b) Home cooked food b. 629 _____

iv. Do you turn off lights when you leave a room?

- a) Yes a.133 _____
- b) No b. 268 _____

v. Do you unplug appliances/ charges when not in use?

- a) Yes a. 9 _____
- b) No b. 18 _____

vi. How do you dry your clothes?

- a) Hang to dry a. 0 _____
- b) Dryer b. 750 _____
- c) Both c. 375 _____

vii. Do you turn off the tap while brushing your teeth?

- a) Yes a. 34 _____
- b) No b. 274 _____

viii. Do you turn off the TV when you are not watching it?

- a) Yes a. 47 _____
- b) No b. 140 _____

ix. Do you turn off your video game system when you are not using it?

- a) Yes a. 29 _____
- b) No b. 90 _____

3.) Hormones in food: Should you worry

Hormones are substances in our body that regulate and maintain the proper functioning of our organs. Recently, hormones have become a topic of concern because these can be found in some of the food that we eat.

The learners will prepare a research report keeping in mind the following points:

- What are hormones?
- Types of hormones present in food
- What precautions do you see when you going to buy vegetables?
- Why is organic produce (vegetables/ fruits) generally smaller in size?
- Side effects of hormones on us (hormonal imbalance)
- Method to check the injected veggies and fruits by FSSAI (write down the steps also.)



4.) Exercise in space:

To become an astronaut, you must go through very intense mental and physical training.

- What kind of physical training do astronauts go through?
- Can you design your own astronaut fitness programme? (At least 5 exercises).

When in space astronauts need to maintain their level of fitness.

- How do they ensure this?

- What exercises do astronauts do in space?



- Note: Paste pictures of the exercises regime you have designed for the astronauts.

Science worksheet

1. Deforestation leads to

- (a) an increase in the temperature of the earth
- (b) imbalance of O_2 and CO_2
- (c) increase in rainfall
- (d) both (a) and (b)

2. Which of the following gases is needed by plants for photosynthesis?

- (a) Oxygen
- (b) Nitrogen
- (c) Carbon dioxide
- (d) Sulphur

3. An increase in the amount of carbon dioxide results in

- (a) winter season
- (b) global warming
- (c) rainfall
- (d) all of these

4. The removal of top layer of soil leads to

- (a) desertification
- (b) rainfall
- (c) snowfall
- (d) deforestation

5. The variety of organisms living on the earth, is referred to as

- (a) biodiversity
- (b) food chain
- (c) lithosphere
- (d) relationship

6. Which of the following activities are prohibited in national parks, sanctuaries and biosphere reserves?

- (a) Poaching
- (b) Hunting
- (c) Felling trees
- (d) All of these

7. The Pachmarhi Biosphere Reserve consists two wildlife sanctuaries named

- (a) Bon and Pachmarhi
- (b) Pachmarhi and Satpura
- (c) Satpura and Bori
- (d) none of these

8. Those species of plants and animals that are found exclusively in a particular area are termed as

- (a) endemic species
- (b) exclusive species
- (c) particular species
- (d) significant species

9. The unwanted plants that grow along with the crops are called

- (a) fertilisers
- (b) manure
- (c) weeds
- (d) kharîf crops

10. The practice of growing two or more dissimilar crops in the same field one after another is

- (a) crop rotation
- (b) tilling
- (c) plantation
- (d) weeding

11. Which of the following is an example of rabi crop?

- (a) Potato
- (b) Onion
- (c) Jute
- (d) Pulses

12. Levelling of soil helps to prevent

- (a) soil erosion
- (b) cultivation
- (c) sowing
- (d) drought

13. Yeast is used in the production of

- 1. Sugar
- 2. Alcohol
- 3. Hydrochloric acid
- 4. Oxygen

14. The process of conversion of sugar into alcohol is called

- 1. Nitrogen fixation
- 2. Moulding
- 3. Fermentation
- 4. Infection

15. Which of the following is a non-renewable source of energy?

- (a) Water
- (b) Coal
- (c) Soil
- (d) Sun

16. Which of the following minerals is present in coal?

- (a) Hydrogen
- (b) Oxygen
- (c) Sulphur
- (d) All of these

17. The process of conversion of wood into coal is called

- (a) carbonisation
- (b) catagenesis
- (c) carboniferous
- (d) none of these

18. The brown variety of coal is

- (a) lignite
- (b) peat
- (c) anthracite
- (d) bituminous

19. The petroleum product which is not used as fuel is

- (a) petrol

- (b) kerosene
- (c) diesel
- (d) petroleum jelly

20. A natural gas stored under high pressure is called

- (a) CNG
- (b) LPG
- (c) KLG
- (d) PNP

SOCIAL STUDIES

1.) The Indian Constitution

- Design a preamble for your school.

Points to remember while framing the preamble –

- Ensure all rights and duties are incorporated in it.
- It should promote equality and justice for all.
- You can also take hint from preamble of 'Constitution of India'.

2.) Tehri Dam was constructed on river Bhagirathi as a hydro- power project. It is the fourth largest dam in the world. \

- List the hydro- power projects in India.
- Scientists, environmentalists and villagers were against these projects. Why?



3.) Prepare a timeline of various events in history of India from the coming of British to present India. Students can also paste the pictures of the events or rulers during British period on the timeline.



THE UK TIMELINE



1188- The Battle of Hattin
William the Conqueror invaded Britain and French influenced the English language for 300 years.



1284- The Compromise of 1284
A group of Catholics among them King Edward, attempted to force upon Parliament to make the government King James I they called.



1707- The Act of Union
Scotland joined England and Wales. They united to form Great Britain.



1807- The Slave Trade Act
It abolished slavery throughout the British Empire except for East India Company (1858)



1838-1841 Queen Victoria's coronation
She became Empress of India (1876) and reigned for 62 years. During the Victorian Age, the UK made great changes in industry, culture and politics. It became the "workshop of the world".



1914-18 World War I
British soldiers experienced the trenches. The people became a part of the conscription.



1921- Ireland independence
Ireland became a Republic when the British left and joined King. Britain left over the UK.



1928- Women's right to vote
British women received the right to vote on the same terms as men aged 21.



1931- Commonwealth of Nations
A group of a political association of 53 countries that's today which got all former British territories.



1939-45- WWII
Great Britain declared war to Nazi Germany and got bombed from then on. This was an atomic period is also called "The Bomb".



1952- Coronation of Elizabeth II
In 1952 she became the longest reigning monarch in British history.



1979- Margaret Thatcher (Conservative Party)
She became the first female British Prime Minister.



1982- The Falklands War
The war against Argentina in the UK concerning the two British overseas territories among which it were the Falkland Islands. It lasted 10 weeks.



1997- Tony Blair (Labour Party)
He won a landslide victory after more than 11 years of Conservative PMs.



2016-2020- Brexit
In 2016 a referendum took place and 52% of British citizens voted to leave EU. After a year the UK finally leaves EU.



2019- Boris Johnson (Conservative Party)
Former Mayor of London, he became PM after Theresa May. He led the Brexit withdrawal agreement.

4.) Complete the given worksheet.

Q.1 Define the terms:

- | | |
|----------------------|-------------------------|
| i) Calligraphist | viii) Natural resources |
| ii) Chronology | ix) Resources |
| iii) Colonization | x) Potential resources |
| iv) Census | xi) Recycling |
| v) Modern period | xii) Stock of resources |
| vi) Bio gas | xiii) Technology |
| vii) Human resources | xiv) Utility |

Q.2 Choose the correct option:

- i) Which one of the following is a human made resources
a. medicine to treat cancer b. spring water c. tropical forest
- ii) Biotic resources are
a. derived from living things b. made by human beings
c. derived from non living things
- iii) Which one of the following is a natural resource
a. forests b. airport c. flyover d. tractor
- iv) Which one of the following is not an abiotic resource?
a. soils b. rocks c. plants d. minerals
- v) Which one of the following is a non renewable resources
a. coal b. solar energy c. water d. forest
- vi) Which one of the following has no economic value
a. iron ore b. petroleum c. natural beauty d. car
- vii) Which one of the following is an inexhaustible resources
a. forests b. wildlife c. sunlight d. fossil fuels
- viii) Technology is
a. natural resource b. a human resource
c. a man made resource d. none of these
- ix) Which one of the following resources is nonrenewable but can be recycled?
a. coal b. water c. wood d. iron
- x) Sustainable development seeks to prevent
a. wastage of resources b. pollution
c. loss of biodiversity d. all of these

Science worksheet

1. Deforestation leads to

- (a) an increase in the temperature of the earth
- (b) imbalance of O₂ and CO₂
- (c) increase in rainfall
- (d) both (a) and (b)

2. Which of the following gases is needed by plants for photosynthesis?

- (a) Oxygen
- (b) Nitrogen
- (c) Carbon dioxide
- (d) Sulphur

3. An increase in the amount of carbon dioxide results in

- (a) winter season
- (b) global warming
- (c) rainfall
- (d) all of these

4. The removal of top layer of soil leads to

- (a) desertification
- (b) rainfall
- (c) snowfall
- (d) deforestation

5. The variety of organisms living on the earth, is referred to as

- (a) biodiversity
- (b) food chain
- (c) lithosphere
- (d) relationship

6. Which of the following activities are prohibited in national parks, sanctuaries and biosphere reserves?

- (a) Poaching
- (b) Hunting
- (c) Felling trees
- (d) All of these

7. The Pachmarhi Biosphere Reserve consists two wildlife sanctuaries named

- (a) Bon and Pachmarhi
- (b) Pachmarhi and Satpura
- (c) Satpura and Bori
- (d) none of these

8. Those species of plants and animals that are found exclusively in a particular area are termed as

- (a) endemic species
- (b) exclusive species
- (c) particular species
- (d) significant species

9. The unwanted plants that grow along with the crops are called

- (a) fertilisers
- (b) manure
- (c) weeds
- (d) kharif crops

10. The practice of growing two or more dissimilar crops in the same field one after another is

- (a) crop rotation
- (b) tilling
- (c) plantation
- (d) weeding

11. Which of the following is an example of rabi crop?

- (a) Potato
- (b) Onion
- (c) Jute
- (d) Pulses

12. Levelling of soil helps to prevent

- (a) soil erosion
- (b) cultivation
- (c) sowing
- (d) drought

13. Yeast is used in the production of

- 1. Sugar
- 2. Alcohol
- 3. Hydrochloric acid
- 4. Oxygen

14. The process of conversion of sugar into alcohol is called

- 1. Nitrogen fixation
- 2. Moulding
- 3. Fermentation
- 4. Infection

15. Which of the following is a non-renewable source of energy?

- (a) Water
- (b) Coal
- (c) Soil
- (d) Sun

16. Which of the following minerals is present in coal?

- (a) Hydrogen
- (b) Oxygen
- (c) Sulphur
- (d) All of these

17. The process of conversion of wood into coal is called

- (a) carbonisation
- (b) catagenesis
- (c) carboniferous
- (d) none of these

18. The brown variety of coal is

- (a) lignite
- (b) peat
- (c) anthracite
- (d) bituminous

19. The petroleum product which is not used as fuel is

- (a) petrol
- (b) kerosene
- (c) diesel
- (d) petroleum jelly

20. A natural gas stored under high pressure is called

- (a) CNG
- (b) LPG
- (c) KLG
- (d) PNP

The End